



User Manual

WA4-EID-XXXXXXXX

Siège social
Les Fontaines de la Duranne
185 avenue Archimède
13857 Aix-en-Provence Cedex 3 - France
Tel. +33 (0)4 42 65 25 65

www.coppernic.fr



COPPERNIC
créateurs en solutions mobiles



Important: All Approvals and safety information are outlined in the WORKABOUTPRO4 Regulatory & Warranty Guide – part number 8000296 provided with each WORKABOUTPRO4.



Siège social

Les Fontaines de la Duranne
185 avenue Archimède
13857 Aix-en-Provence Cedex 3 - France
Tel. +33 (0)4 42 65 25 65

www.coppernic.fr

USER MANUAL - DPD 150224 A00 | 2 / 12

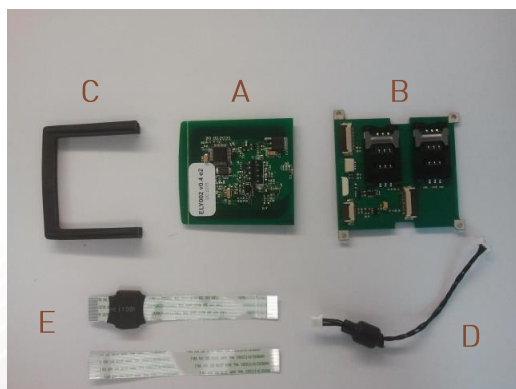
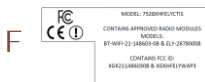
1. PRODUCT DESCRIPTION

The RFID Module HF ELYCTIS for WAP is a module for the WORKABOUT PRO 4 hand-held computer with a BT/WIFI module and a finger print sensor UPEK TCETC1 (option: Imager 2D or OCR reader 310e and/or Smartcard reader).

2. INSTALL PROCEDURE

The kit of the RFID Module HF ELYCTIS for WAP is composed of 7 parts:

- A. RFID READER HF ELYCTIS
- B. Splitter Board V3
- C. RUBBER PCB GUIDE
- D. USB cable
- E. SSB FLEX CABLE / SCANNER FLEX CABLE
- F. LABEL CE/FCC FOR WORKABOUTPRO4
- G. USER MANUAL WA4-EID-XXXXXXX



Before installing a module in the WORKABOUT PRO 4, all power sources must be turned off.



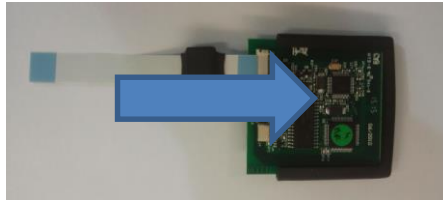
- Remove the batteries. If your unit is using AC power, disconnect it.
- Remove existing End cap at the top of the WORKABOUT PRO 4 (retain the screws).



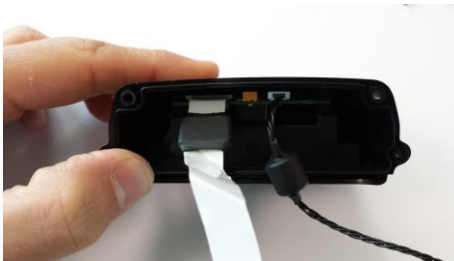
- Remove back plate at the back of the WORKABOUT PRO 4 (retain the screws).



- Connect the flex cable and slide the RFID reader in the PCB guide.



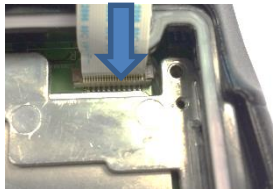
- Connect the USB cable and slide the PCB guide in the ISA End Cap.



- Assemble and Screw the Endcap.



- Connect the scanner flex cable to scanner connector.



- Assemble and Screw (screws delivered with the kit) the RFID Module on metallic frame.





COPPERNIC
créateurs en solutions mobiles

- Connect the scanner flex cable, the RFID Flex Module and the UPEK TCETC1 cable.



- Assemble and Screw the back plate of the WORKABOUT PRO 4.



Imager Option



OCR Option

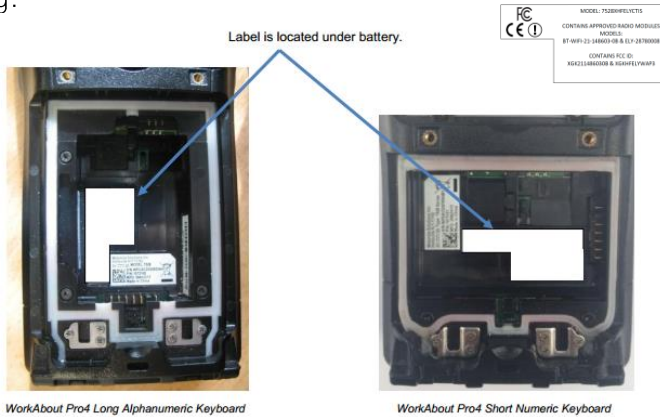


Siège social
Les Fontaines de la Duranne
185 avenue Archimède
13857 Aix-en-Provence Cedex 3 - France
Tel. +33 (0)4 42 65 25 65

www.coppernic.fr

USER MANUAL - DPD 150224 A00 | 7 / 12

- Before Replacing battery, stick the CE/FCC Label in the location following:



For detailed instructions,
Please refer to the WORKABOUT PRO 4 Hand-Held Computer
User Guide.

3. **READING AREA**

This area depends on the TAG type, TAG packaging, Tag position and environment (metallic or not).

The reading location is from the back of the endcap.





COPPERNIC
créateurs en solutions mobiles

4. RFID REGULATORY INFORMATION

IMPORTANT NOTE FOR NORTH AMERICA

The RFID must not be used whilst the AC/DC adaptor is powering the host WORKABOUTPR04.

FCC INFORMATION TO USERS

Radiation Exposure Compliance

This product complies with the FCC RF exposure limits for an uncontrolled environment.

FEDERAL COMMUNICATION COMMISSION INTERFERENCE STATEMENT

This equipment has been tested and found to comply with the limits for a Class B digital device, pursuant to Part 15 of the FCC Rules. These limits are designed to provide reasonable protection against harmful interference in a residential installation. This equipment generates uses and can radiate radio frequency energy and, if not installed and used in accordance with the instructions, may cause harmful interference to radio communications. However, there is no guarantee that interference will not occur in a particular installation.

Siège social

Les Fontaines de la Duranne
185 avenue Archimède
13857 Aix-en-Provence Cedex 3 - France
Tel. +33 (0)4 42 65 25 65

www.coppernic.fr

USER MANUAL - DPD 150224 A00 | 10 / 12

If this equipment does cause harmful interference to radio or television reception, which can be determined by turning the equipment off and on, the user is encouraged to try to correct the interference by one of the following measures:

- Reorient or relocate the receiving antenna.
- Increase the separation between the equipment and receiver.
- Connect the equipment into an outlet on a circuit different from that to which the receiver is connected.
- Consult the dealer or an experienced radio/TV technician for help.

THIS DEVICE COMPLIES WITH PART 15 OF THE FCC RULES. OPERATION IS SUBJECT TO THE FOLLOWING TWO CONDITIONS: (1) THIS DEVICE MAY NOT CAUSE HARMFUL INTERFERENCE, AND (2) THIS DEVICE MUST ACCEPT ANY INTERFERENCE RECEIVED, INCLUDING INTERFERENCE THAT MAY CAUSE UNDESIRE OPERATION.

FCC Caution: Any changes or modifications not expressly approved by the party responsible for compliance could void the user's authority to operate this equipment.



COPPERNIC
créateurs en solutions mobiles

CE MARKING

Please CE marking and details of other country markings refer to the Declaration of Conformity (Doc) at <http://www.coppernic.fr>

Siège social

Les Fontaines de la Duranne
185 avenue Archimède
13857 Aix-en-Provence Cedex 3 - France
Tel. +33 (0)4 42 65 25 65

www.coppernic.fr

USER MANUAL - DPD 150224 A00 | 12 / 12