

# WORKABOUT PRO S Hand-Held Computer Quick Reference Guide

June 23, 2006      PN 8100004.A



**ISO 9001 Certified  
Quality Management System**



**© Copyright 2006 by Psion Teklogix Inc., Mississauga, Ontario, Canada**

This document and the information it contains is the property of Psion Teklogix Inc., is issued in strict confidence, and is not to be reproduced or copied, in whole or in part, except for the sole purpose of promoting the sale of Psion Teklogix manufactured goods and services. Furthermore, this document is not to be used as a basis for design, manufacture, or sub-contract, or in any manner detrimental to the interests of Psion Teklogix Inc.

*All trademarks are the property of their respective holders.*

## Return-To-Factory Warranty

Psion Teklogix provides a return to factory warranty on this product for a period of twelve (12) months in accordance with the Statement of Limited Warranty and Limitation of Liability provided at [www.pSIONteklogix.com/warranty](http://www.pSIONteklogix.com/warranty). (If you are *not* already a member of Teknet and you attempt to view this warranty, you will be asked to register. As a member of Teknet, you'll have access to helpful information about your Psion Teklogix products at no charge to you.) In some regions, this warranty may exceed this period. Please contact your local Psion Teklogix office for details. For a list of offices, refer to "Support Services & Worldwide Offices" on page 28. The warranty on Psion Teklogix manufactured equipment does not extend to any product that has been tampered with, altered, or repaired by any person other than an employee of an authorized Psion Teklogix service organization. See Psion Teklogix terms and conditions of sale for full details.

***Important: Psion Teklogix warranties take effect on the date of shipment.***

## Service

Psion Teklogix provides a complete range of product support services to its customers. For helpful information about accessing our services, please refer to the *WORKABOUT PRO C, M-E & S Hand-Held Computer Regulatory & Warranty Guide*, PN 8000084.

## Disclaimer

Every effort has been made to make this material complete, accurate, and up-to-date. In addition, changes are periodically added to the information herein; these changes will be incorporated into new editions of the publication.

Psion Teklogix Inc. reserves the right to make improvements and/or changes in the product(s) and/or the program(s) described in this document without notice, and shall not be responsible for any damages, including but not limited to consequential damages, caused by reliance on the material presented, including but not limited to typographical errors.



---

# Table Of Contents

1. Basic Preparation . . . . .	3
1.1 Charging The Battery . . . . .	3
1.2 Installing The Battery . . . . .	4
1.3 Switching The Unit On. . . . .	4
1.4 Switching The Unit Off (Suspend). . . . .	4
2. Getting To Know The WORKABOUT PRO S. . . . .	5
2.1 Features. . . . .	5
2.2 The Keyboard . . . . .	7
2.2.1 Modifier Keys . . . . .	8
2.2.2 The Keys . . . . .	9
2.2.3 Adjusting The Keypad Backlight. . . . .	10
2.3 The Display . . . . .	11
2.3.2 Calibrating The Touchscreen . . . . .	12
2.4 Indicators . . . . .	13
2.4.1 The LED. . . . .	13
2.4.2 Onscreen Indicators . . . . .	14
2.4.3 Audio Indicators. . . . .	16
3. Navigating In Windows CE . . . . .	17
3.1 Navigating A Touchscreen . . . . .	17
3.2 Navigating Using The Keyboard . . . . .	17
3.3 The Startup Desktop. . . . .	18
3.3.1 Accessing Desktop Icons . . . . .	19
3.3.2 The Taskbar . . . . .	19
3.4 The Start Menu. . . . .	20

3.5 Using A Dialog Box . . . . .	25
4. General Maintenance . . . . .	27
4.1 Caring For The Touchscreen . . . . .	27
4.2 Cleaning The WORKABOUT PRO S . . . . .	27
5. Support Services & Worldwide Offices . . . . .	28

Thank you for choosing the WORKABOUT PRO. You've purchased a flexible hand-held computer with a wide range of options that make configuring and upgrading the unit fast and easy, enabling you to meet your changing needs now and in the future.

---

## I. Basic Preparation

Thank you for choosing the WORKABOUT PRO. You've purchased a hand-held with a wide range of options to help you tailor the unit to meet your exact requirements now and in the future.

Your WORKABOUT will provide many years of productive use.

**Important:** *All approval and safety information is outlined in the 'WORKABOUT PRO C, M-E & S Regulatory & Warranty Guide', PN 8000084. It is important that you review all safety guidelines before charging a battery or operating a scanner.*

This quick start guide provides basic information on the operation and features of the Psion Teklogix WORKABOUT PRO S Hand-Held Computer. For more detailed information, refer to the *WORKABOUT PRO M-E, C & S Hand-Held Computer User Manual* or the documentation supplied with the application you are using.

Typically, WORKABOUT PRO S hand-helds are configured at the factory and arrive ready for use.

### I.1 Charging The Battery

Batteries shipped from the factory are not charged. They must be fully charged prior to use. Full capacity may not be reached until at least 5 full charge/discharge cycles have been performed.

Keep in mind also that, along with the main battery, the WORKABOUT PRO S is equipped with an internal, backup battery that preserves data stored on the unit while the main battery is swapped.

**Important:** *The backup battery is trickle charged from the main battery. To maximize battery life, avoid excessive discharging and*

*recharging of the backup battery by keeping the main battery fully charged.*

***IF YOU ARE POWERING UP A NEW UNIT, a warning message may appear on the screen indicating that the backup battery capacity is low. To recharge the backup battery, you must fully charge the **WORKABOUT PRO** with the main battery installed in the unit. An overnight charge is recommended.***

## 1.2 Installing The Battery

- Turn the fasteners at the base of the battery cover counter-clockwise to unlock the cover and remove it. The top of the stylus is shaped to help you loosen the fasteners.
- Insert the *charged* battery. Replace the battery cover, and turn the fasteners at the base of the battery cover clockwise to lock the battery in place.

**Note:** *If you are using a docking station, you can insert an uncharged battery, dock the unit and switch it on.*

## 1.3 Switching The Unit On

- Press and hold down the [ENTER/ON] key for at least one second to switch the unit on.
- When the LED flashes green, release [ENTER/ON].

The startup desktop is displayed.

**Note:** *If the unit was already in use – the unit may be off (suspend state) – pressing [ENTER/ON] ‘wakes’ the unit from this state. The screen in which you were working prior to the suspend state is displayed.*

## 1.4 Switching The Unit Off (Suspend)

- Press the [FN/BLUE] key, and then press [ENTER/ON] to switch off the WORKABOUT PRO S.

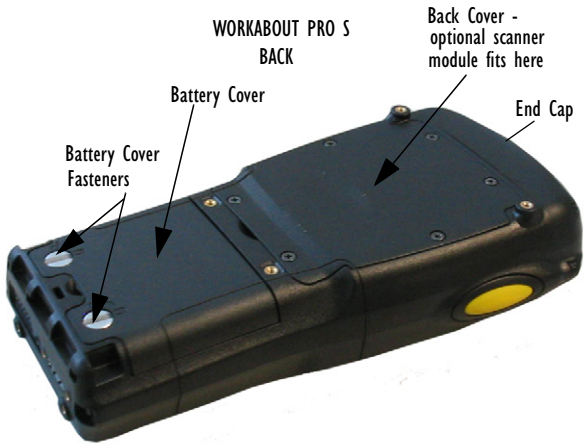


---

## 2. Getting To Know The WORKABOUT PRO S

### 2.1 Features





## 2.2 The Keyboard



The keyboard is equipped with a set of standard keys along with a [ALPHA/ORANGE] and a [FN/BLUE] modifier key to provide access to additional keys and system functions. These extra keys are colour coded in *orange* and *blue* print above the standard keys.

## 2.2.1 Modifier Keys

The [CTRL], [ALT], [ALPHA/ORANGE] and [FN/BLUE] keys are *modifier* keys. Pressing a modifier key changes the function of the next key pressed. For example, alpha keys are displayed in *orange* print above the numeric key [1]. Pressing the [ALPHA/ORANGE] key followed by the [1] key displays the letter *a* rather than the number *1*.

The [CTRL] and [ALT] keys operate much like a desktop keyboard except that they are not chorded – two keys cannot be held down simultaneously. The modifier key must be pressed first followed by the key whose function you want modified.

### Activating Modifier Keys

When a modifier key is pressed once, the modifier key icon displays the key in *lowercase* letters in the taskbar. For example, pressing [CTRL] once displays *ctrl key* in the taskbar. Once the next key is pressed, the modifier key becomes inactive and disappears from the taskbar.

### Locking Modifier Keys

When a modifier key is pressed twice, it is ‘locked’ on. A ‘locked’ modifier key icon displays the key in *uppercase* letters in the taskbar. For example, pressing the [FN/BLUE] key twice locks it on – it is displayed as **BLUE KEY** in the taskbar at the bottom of the screen. The locked modifier key remains active until it is pressed a third time to unlock or turn it off.

## 2.2.2 The Keys

### The [ALPHA] Key

Used to access the alpha characters displayed in *orange* print above numeric keys [1] through [9].

### The [CAPS] Key

Used to display uppercase alpha characters. Press [ALPHA/ORANGE] [.] to activate this key.

### The Arrow Keys

Contained in the round disk-shaped key at the top of the keyboard. Moves the cursor around the screen – up, down, left and right.

### The [BKSP/DEL] Key

Moves the cursor one character to the left, erasing the incorrectly entered key stroke.

[DEL] key ([FN/BLUE] [BKSP]) erases the character at the cursor position.

### The [CTRL] And [ALT] Key

Modify the function of the next key pressed and are application dependent.

### The [TAB] Key

Usually moves the cursor to the next field to the right or downward. Pressing [ALPHA/ORANGE] [TAB] move the cursor backward.

### The [ESC] Key

Generally used as a keyboard shortcut to close the current menu, dialog box or activity and return to the previous one.

## The [SPACE] Key

Inserts a blank space between characters. In a Windows dialog box, the [SPACE] key enables (√) or disables a checkbox. This key is accessed by pressing [ALPHA/ORANGE] followed by the numeric key [0].

## The [SCAN] Keys

Activate the scanner beam while pressed. For units without internal scanners, these keys are inoperable.

## The Function Keys — [F1] to [F4]

These keys are not directly accessible from the keyboard – press [FN/BLUE] followed by the appropriate numeric key to access a function key. These keys are provided to support user applications that require [F] keys.

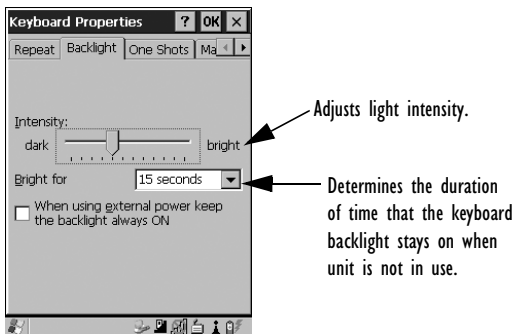
### 2.2.3 Adjusting The Keypad Backlight

To adjust the intensity of the keypad backlight and the conditions under which this backlight is activated

- In the *Control Panel*, choose the **Keyboard** icon.

**Note:** *Access may be restricted to supervisory use.*

- In the *Keyboard Properties* dialog box, open the **Backlight** tab.



## 2.3 The Display

The display backlight can be adjusted to improve visibility in varied light conditions.

### 2.3.1 Adjusting The Backlight

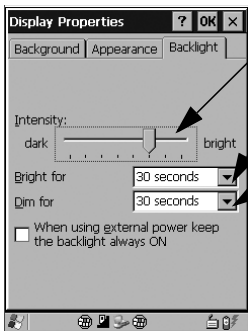
To adjust the display backlight manually:

- Press the **Backlight** key [  ] to cycle through from light to darkest, and then back to lightest.

To set the range of the backlight:

- Choose the **Display** icon in the *Control Panel*.
- Choose the **Backlight** tab.

**Note:** *Adjustments may be restricted to supervisory use only.*



Adjusts the light intensity of the backlight.

Sets duration of time the backlight stays on at the configured intensity when the unit is not in use.

Sets duration of time the backlight stays on at half the configured intensity when the unit is not in use.

## 2.3.2 Calibrating The Touchscreen

**Note:** This function may be restricted to supervisory use.

If the touchscreen has never been calibrated or if the stylus pointer is not accurate when you tap on an item:

- In the *Control Panel*, choose the **Stylus** icon, select the **Calibration** tab, and then tap on the **Recalibrate** button.



- Follow the onscreen directions to calibrate the display.



## 2.4 Indicators

The WORKABOUT PRO S uses an LED (Light Emitting Diode), onscreen messages and audio tones as indicators.

### 2.4.1 The LED

A single, two-coloured LED is located on the left side of the unit, just above the [1] key. When you press [ENTER/ON], the LED flashes green to indicate that the unit has been powered up. The LED table below outlines the behaviour of the LED while the unit is docked in a charger.

Keep in mind that the application running on the WORKABOUT PRO S can dictate how the LED operates. Review the documentation provided with the application to determine LED behaviour.

LED Behaviour	Indication
Solid Green	Charge complete.
Blinking Green	Charge in progress.
Solid red	Temperature outside charge range.
Blinking red	Battery is not charging. Battery fault.

## 2.4.2 Onscreen Indicators

The taskbar at the bottom of the screen displays a variety of system status indicators.



The taskbar changes dynamically, and only those icons that are applicable are displayed. Double-tapping on an icon displays the associated dialog box.

### Windows® Start Button

You can display the *Start Menu* by tapping on the Windows® **Start** button in the taskbar.



### Modifier Key Indicators

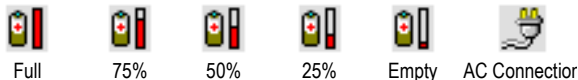
[CTRL], [ALT], [FN/BLUE] and [ALPHA/ORANGE] are modifier keys that have onscreen indicators to show when a key is active or locked. If a modifier key is pressed once to activate it, the key is displayed in the taskbar in *lowercase* characters.

If a modifier key is pressed twice, it is ‘locked on’ and the onscreen indicator is displayed in *uppercase* letters in the taskbar.

blue  
key      BLUE  
KEY

## Battery Gauge

Battery icons are a visual indication of the remaining battery power. If the unit is using external AC power, an AC icon is displayed.



## Battery Charge

The battery charge icon is displayed in the taskbar when the handheld battery is being charged.



## LIF and USB Devices

When a device such as a docking station or a charger is connected to the USB (tether) port or the LIF (Low Insertion Force) port and is activated, an associated icon appears in the taskbar.



New device connected: LIF Port



New device connected: USB Port

## Security Level

Security levels can be set to limit access and prevent inadvertent changes to application settings.



## Bluetooth Radio

This icon indicates that a Bluetooth radio is operating in your unit.





### 2.4.3 Audio Indicators

The audio speaker provides a variety of sounds and can be configured to emit a sound under various conditions. Refer to ‘Volume Adjustment’ in the *‘WORKABOUT PRO Hand-Held Computer User Manual’* for details.

**Note:** *The volume can also be adjusted using the Volume & Sound Properties dialog box in the Control Panel.*

### Adjusting The Speaker Volume

The volume keys are located to the left and right of the arrow key and are used to adjust the volume emitted from your unit.

The *increase volume* key is labelled with a plus symbol  and the *decrease volume* key is labelled with a minus sign .

To adjust the speaker volume:

- Press the [FN/BLUE] key twice to lock it ‘on’.
- Press the [RIGHT] arrow key to *increase* the volume or the [LEFT] arrow key to *decrease* the volume.
- Press the [FN/BLUE] key again to ‘unlock’ it.

---

## 3. Navigating In Windows CE

On the WORKABOUT PRO S, the ‘point and click’ action associated with a desktop computer mouse is accomplished by tapping a stylus on the touchscreen. In addition, every ‘point and click’ action, an equivalent keyboard shortcut is also available.

### 3.1 Navigating A Touchscreen

All WORKABOUT PRO S units are equipped with a touchscreen and a stylus.

To prevent damage to the touchscreen, use only the stylus provided – **never** use a screw driver or other sharp objects.

To open a file, launch an applet or open a folder:

- Tap the stylus on the appropriate icon.

**Note:** *If the touchscreen is not registering your screen taps accurately, it may need recalibration. Refer to “Calibrating The Touchscreen” on page 12.*

### 3.2 Navigating Using The Keyboard

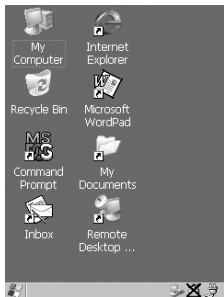
You can also use the keyboard to choose icons and navigate dialog boxes, display the desktop, and so on.

Unlike a desktop computer, the WORKABOUT PRO S does not support key chording (pressing two keys at the same time). You must press one key followed by the next in sequence.

Operation	Key or Key Combination
Switch between applications	[ALT] [TAB]
Open task manager screen	[ALT] [ESC]
Move cursor	Arrow keys
Open file, folder or icon	[ENTER]
Exit & Save	[ENTER]
Close/Exit & Do Not Save	[ESC]
Navigate Dialog Boxes	Next field: [TAB] Move cursor up: [ALPHA/ORANGE][TAB] Display next 'tab': [CTRL] [TAB]
Select Radio Button/ Press Button	[SPACE] ([ALPHA/ORANGE] [0])
Go to Start Menu	[FN/BLUE][.]

### 3.3 The Startup Desktop

When the unit boots up, the startup desktop is displayed. Applications stored in the Startup folder start up immediately. The Startup folder is located in: *\Windows\Startup* and *\Flash Disk\Startup*.



### 3.3.1 Accessing Desktop Icons

- Double-tap on the icon to open a window or, in the case of an application icon, launch an application.

### 3.3.2 The Taskbar



A taskbar at the bottom of the screen displays icons through which you can view the security level and battery capacity. A unit equipped with a Bluetooth radio displays the appropriate icon in the taskbar. A hand-held attached to a charger, cradle or docking station displays the associated icon, and so on.

The taskbar also displays active modifier keys – [ALT], [CTRL], [ALPHA/ORANGE] and [FN/BLUE]. Keys that have been locked “on” are displayed in *uppercase* letters.

#### Using The Taskbar

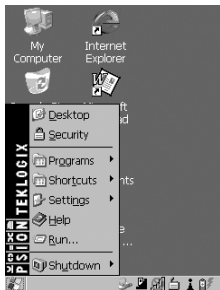
- Tap on an icon to display the associated dialog box. For example, tapping on the **battery** icon displays the *Power Properties* dialog box that indicates the current battery capacity.

## 3.4 The Start Menu

The *Start Menu* lists operations you can access and work with. It is available from the startup desktop or from within any application.

To display the menu:

- Tap on the Windows **Start** button in the taskbar. Tap on the item in the menu with which you want to work.



**Note:** If your touchscreen is disabled, press [BLUE] [.]

### The Desktop

Choosing **Desktop** from the *Start Menu* displays the desktop.

### Security Settings

To assign a security level:

- Choose **Security** from the *Start Menu*.





- Select a security level from the dialog box, and type the appropriate password.

To change the password:

**Note:** *Keep in mind that this is the same password as that assigned through the **Password** control panel applet.*

- Choose a security level, and enter the existing password in the *Password* field.
- Choose the **Set Password** button.

In the *Password Properties* dialog box:

- Type the new password in the *Password* text box, and retype the new password in the *Confirm Password* text box.

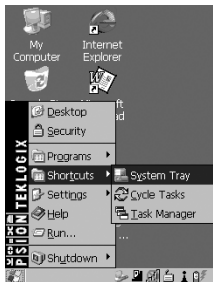
## Programs

*Programs* displays a sub-menu of options with which you can work to access applications.



## Shortcuts

This menu provides access to task shortcuts:



## The System Tray

Allows keyboard access to the icons in the taskbar at the bottom of the screen. The taskbar displays indicators such as a battery capacity gauge. These indicators are attached to dialog boxes that provide additional information.

- Choose **System Tray** from the *Shortcuts* menu.

When **System Tray** is chosen, the taskbar icons become accessible. To display the dialog box attached to an icon:

- Use the [LEFT] and [RIGHT] arrow keys to highlight the icon with which you want to work.
- Press [ENTER/ON] to display the associated dialog box.

## Cycle Tasks

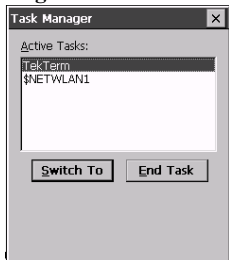
Used to cycle through active applications (providing the Task Manager is not open). To cycle to the next active task:

- Tap on **Cycle Tasks** in the *Shortcuts* menu.

## The Task Manager

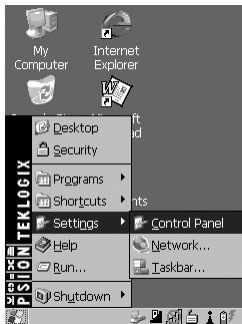
Used to switch to another task or to end an active task. To display the task manager window:

- Tap on **Task Manager** in the *Shortcuts* menu.



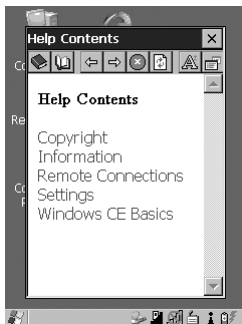
## Settings

Tapping on **Settings** displays a sub-menu of options with which you can access the *Control Panel* applets, configure your radio (*Network and Dial-up Connections*) and customize the *Taskbar and Start Menu*.



## Help

Tapping on **Help** provides access to a list of descriptive files that outline the basics of Windows CE .NET.



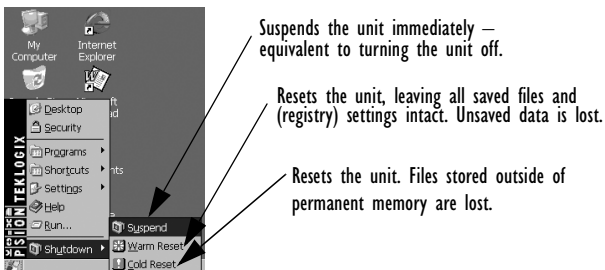
## Run

Choosing the **Run** option displays a dialog box in which you can enter the name of the program, folder or document you want to open.



## Shutdown

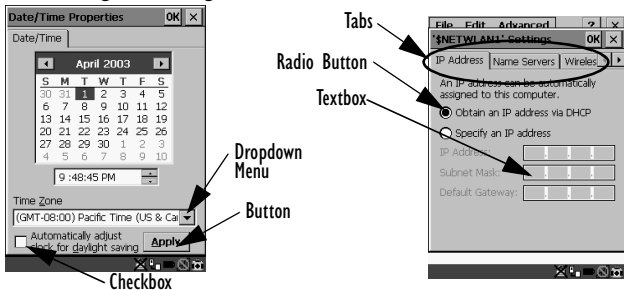
Tapping on **Shutdown** displays options for a shutdown.



**Note:** This menu varies depending on the security level. At **User** level, the Shutdown sub-menu is replaced with a single option: Suspend. A sub-menu is not available.

**Teklogix** security level provides another option: Bootloader. This option behaves like cold-reset, except that the unit launches **Bootloader** rather than **Windows CE .NET**.

## 3.5 Using A Dialog Box



**Note:** Tap the stylus on a dialog box element to select or deselect it, display a dropdown menu and so on. To use the keyboard, refer to “Navigating Using The Keyboard” on page 17.

Dialog boxes like the samples in this section contain one or more of the following elements:

**Tab:** Tabs separate different elements of a dialog box. Tap the stylus on the tab with which you want to work.

**Textbox:** A textbox requires that you type information. Tap on the textbox you want to work with to highlight it, and then type the appropriate information.

**Dropdown:** This type of menu is identified by up and down arrows next to the dropdown menu to indicate that additional options are available. Tap on the menu to highlight it, and tap on the arrows attached to the menu to cycle through the options.

**Checkbox:** This box allows you to select or deselect an option. To select (√) or deselect a checkbox, tap the stylus in the checkbox.

**Radio buttons:** These buttons allow you to choose from a number of options. For example, in the sample screen under section 3.5 on page 25, you can choose to **Obtain an IP address via DHCP** or **Specify an IP address**. Tap on a radio button to activate the option next to it.

**Buttons:** This type of button allows you to **Save**, **Delete** and so on, the options you’ve chosen in a dialog box. Tap on the button you want to execute.

**Saving Your Choices:** Once you’ve made all your changes, tap on the **OK** button to save your changes and exit the window.

**Note:** If an item in a dialog box is displayed in grey text, the item is not currently available.

---

## 4. General Maintenance

### 4.1 Caring For The Touchscreen

The touchscreen can be permanently damaged by harsh chemicals and is susceptible to abrasions and scratches. Using sharp objects on the touchscreen can scratch or cut the plastic or crack the internal conductive coating. Protect the touchscreen from the following chemicals:

- mustard, ketchup,
- sodium hydroxide,
- concentrated caustic solutions,
- benzyl alcohol, and
- concentrated acids.

If touchscreens are used in harsh environments, apply disposable screen protectors to dramatically extend the life of the touchscreen.

### 4.2 Cleaning The WORKABOUT PRO S

***Important:*** *Do not immerse the unit in water. Dampen a soft cloth with mild detergent to wipe the unit clean.*

- Use ***only*** mild detergent or soapy water to clean the unit.
- Avoid abrasive cleaners, solvents or strong chemicals. The plastic case is susceptible to harsh chemicals. The plastic is partially soluble in oils, mineral spirits and gasoline. The plastic slowly decomposes in strong alkaline solutions.
- To clean ink marks from the keypad and touchscreen, use isopropyl alcohol.

---

## 5. Support Services & Worldwide Offices

Psion Teklogix provides a complete range of product support services to its customers worldwide. These services include technical support and product repairs.

To locate the service address and phone number nearest to you, refer to the *WORKABOUT PRO C, M-E & S Hand-Held Computer Regulatory & Warranty Guide, PN 8000084*, or visit our website:

[www.psionteklogix.com](http://www.psionteklogix.com)